

# **APS-V Battery Charger Manual**

# Content

[Specifications](#)

[Description](#)

[Package Contents](#)

[Precautions](#)

[Recommendations for Use](#)

[Battery Charging](#)

[Legal Compliances and Disclaimers](#)

# Specifications

## APS-V

SKU	79186
Power adapter input voltage	100-240 V □ (110 V for US)
Power adapter output voltage and current	5 V □ 2 A / 9 V □ 3 A
APS-V charger input voltage and current	5 V □ 2 A / 9 V □ 3 A (Slot A)
Rated output voltage	4.2 V □
Battery compatibility	APS 5/5T/3/2
Charging temperature range	0 °C...+35 °C (+32 °F...+95 °F)
Dimensions	77x52x37 (3 x 2.05 x 1.46 inches)
Weight	0.13 kg (4.59 oz)



# Description

**APS-V** charger is designed to charge APS 5/5T/3/2 rechargeable batteries used with Pulsar devices and supports USB Power Delivery fast charging technology for APS 5 and APS 5T batteries using a standard charging kit (USB Type-C cable, power adapter).

# Package Contents

- APS-V charger
- Power adapter
- USB Type-C Cable
- Operating Manual

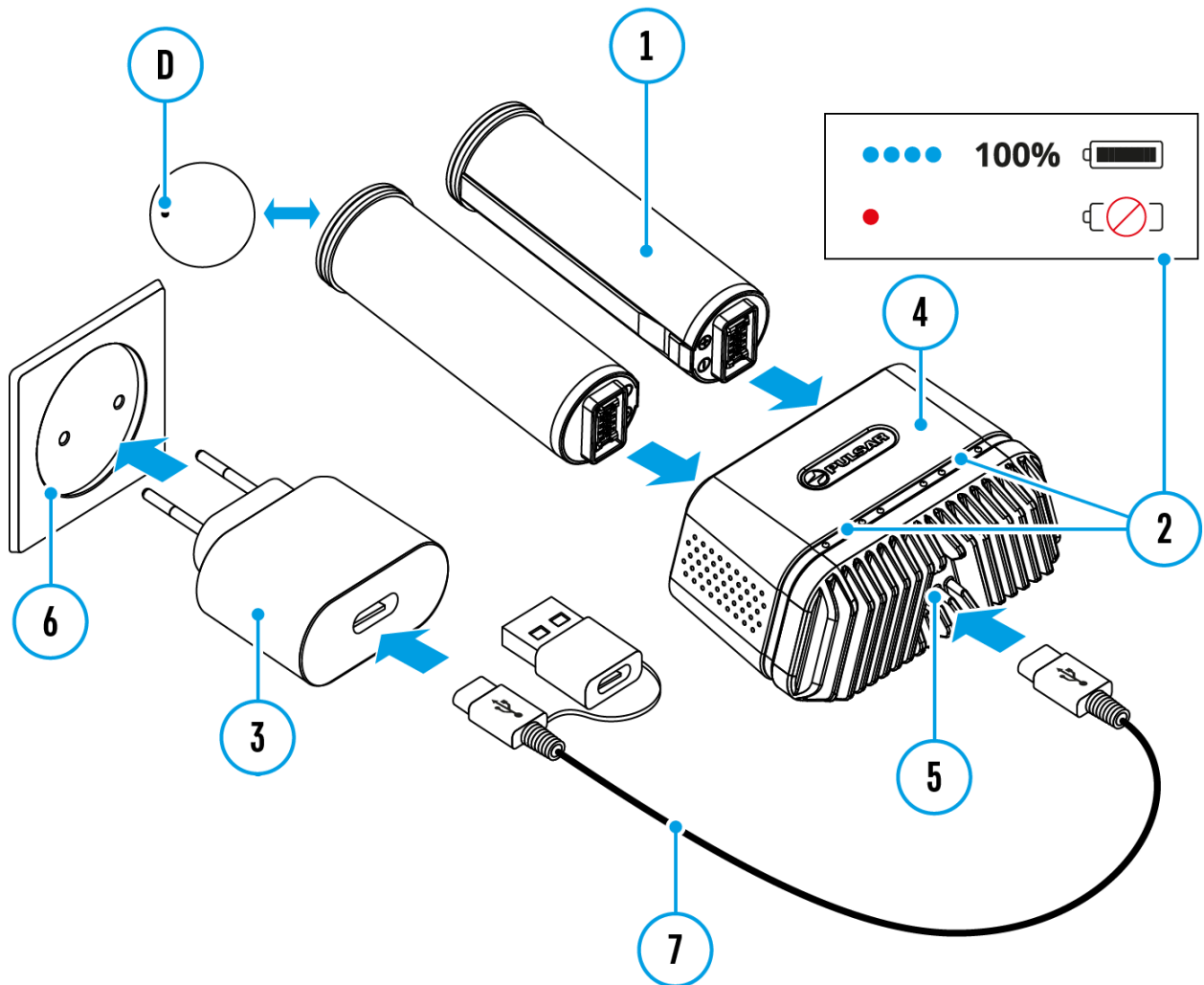
# Precautions

- Always use this charger or APS 5 charger (for APS 5 and APS 5T) or APS charger (for APS 3 and APS 2) supplied with the device to charge APS 5/5T/3/2 batteries. Using the unsuitable charger can cause irreparable damage to the battery and fire.
- Do not charge the battery immediately after bringing it from cold to warm. Wait at least 30 minutes for the battery to warm up.
- Do not leave the battery unattended while charging.
- Do not use the charger if it has been modified or damaged.
- Do not leave the battery in a charger connected to the network after charging is complete.
- Do not expose the battery and charger to high temperatures and naked flame.
- Do not disassemble or deform the battery or charger.
- Do not drop and strike the battery and charger.
- The charger is not designed to be immersed in water.
- Keep the charger out of the reach of children.

# Recommendations for Use

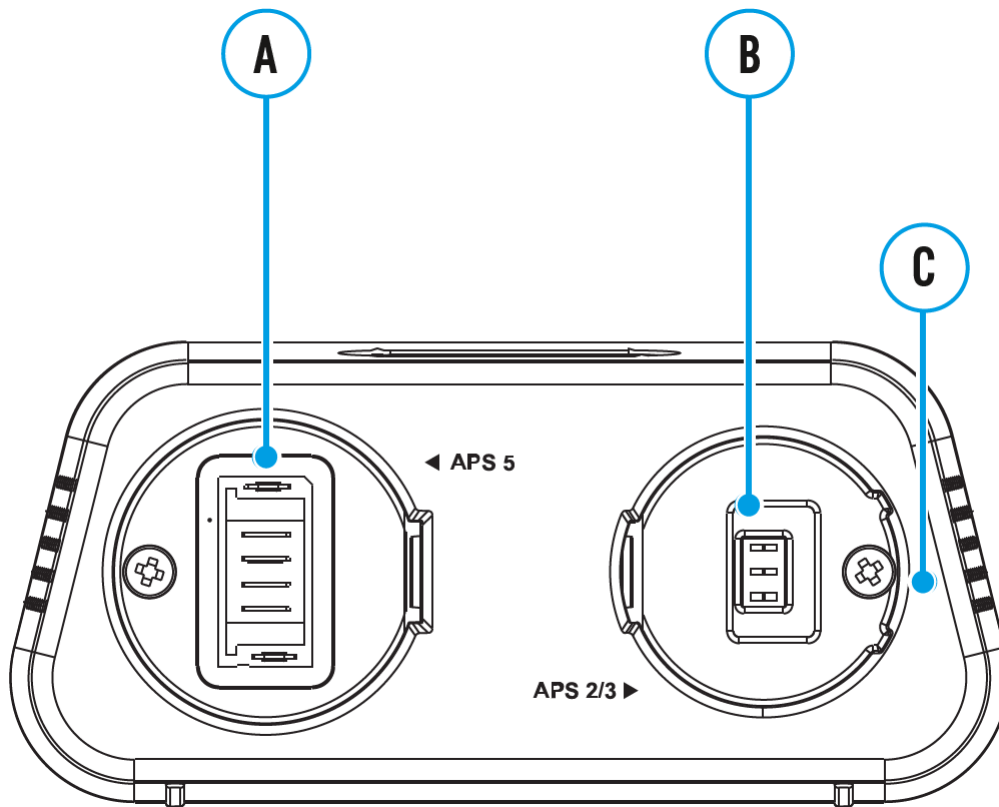
- The battery is to be charged at an ambient temperature of 0 °C...+35 °C (+32 °F...+95 °F). Otherwise, lifespan of the battery will decrease significantly.
- Do not use the charger at temperatures outside the range of 0 °C...+35 °C (+32 °F...+95 °F).

# Battery Charging










1. Insert the battery\* **(1)** along the guide to the stop into the APS-V charger slot **(4)** (see. Fig.).
2. Point **D** on the APS 2/3 battery and Point **C** on the charger should be aligned.
3. Connect the plug of the USB Type-C cable **(7)** to the USB Type-C connector of the power adapter **(3)**.
4. Connect the other end of the USB Type-C cable to the USB Type-C connector **(5)** of the charger **(4)** by removing the USB Type-A adapter.
5. Plug the power adapter **(3)** into a socket 100-240 V **(6)** (110 V socket for US).
6. LED indication **(2)** displays battery charging level (see Table).

7. Two batteries can be charged at the same time. Slot **A** is for APS 5 and APS 5T batteries. Slot **B** is for APS 3 and APS 2 batteries.



LED indication (2) in the battery charging mode	Battery Level
	Battery level is from 0% to 25%
	Battery level is from 26% to 50%
	Battery level is from 51% to 80%
	Battery level is from 81% to 99%
	The battery is fully charged. Charging will automatically stop. The battery can be disconnected from the charger.

	Defective battery. It is forbidden to use the battery.
LED indication (2) in the standby mode**	Battery Level
	Battery level is from 0% to 25%
	Battery level is from 26% to 50%
	Battery level is from 51% to 80%
	Battery level is from 81% to 99%
	The battery is fully charged. It can be disconnected from the charger.
	Defective battery. It is forbidden to use the battery.

\* Purchased separately or supplied as package contents of a device.

\*\* Standby mode – an operating mode in which batteries are inserted into the charger, but the power adapter is not connected. In this mode, the indication is on for 10 seconds.

**Attention!** When charging an APS 5 or APS 5T battery with a power adapter that does not support USB fast charging technology, the charge time increases and it is indicated by a slow flashing LED light.

**Attention!** The charger heats up during fast charging. Excess heat is removed through the radiator and does not affect the device operation.

# Legal Compliances and Disclaimers

**Updates of the Product.** The manufacturer reserves the right at any time, without mandatory prior notice to the Customer, to make changes to the package contents (subject to the applicable laws, if any), design and characteristics that do not impair the quality of the Product.

**Limitation of Liability.** Subject to mandatory applicable laws and regulations: manufacturer will not be liable for any claims, actions, suits, proceedings, costs, expenses, damages or liabilities (if any), arising out of the use of this product. Operation and use of the product are the sole responsibility of the Customer. Manufacturer's sole undertaking is limited to providing the product(s) and related services in accordance with the terms and conditions of concluded transactions, including provisions established in warranty. The provision of products sold and services performed by Manufacturer to the Customer shall not be interpreted, construed, or regarded, either expressly or implied, as being for the benefit of or creating any obligation toward any third party (other than Distributor, Dealer, Buyer). Manufacturer's liability hereunder for damages, regardless of the form or action, shall not exceed the fees or other charges paid to Manufacturer for the product(s) and/or service(s).

MANUFACTURER WILL NOT BE LIABLE FOR LOST REVENUES OR INDIRECT, SPECIAL, INCIDENTAL, CONSEQUENTIAL, EXEMPLARY, OR PUNITIVE DAMAGES, EVEN IF THE MANUFACTURER KNEW OR SHOULD HAVE KNOWN THAT SUCH DAMAGES WERE POSSIBLE AND EVEN IF DIRECT DAMAGES DO NOT SATISFY A REMEDY.

---

For technical support please contact [support@pulsar-vision.com](mailto:support@pulsar-vision.com).

Answers to frequently asked questions about the devices can also be found in the **FAQ** section.

